

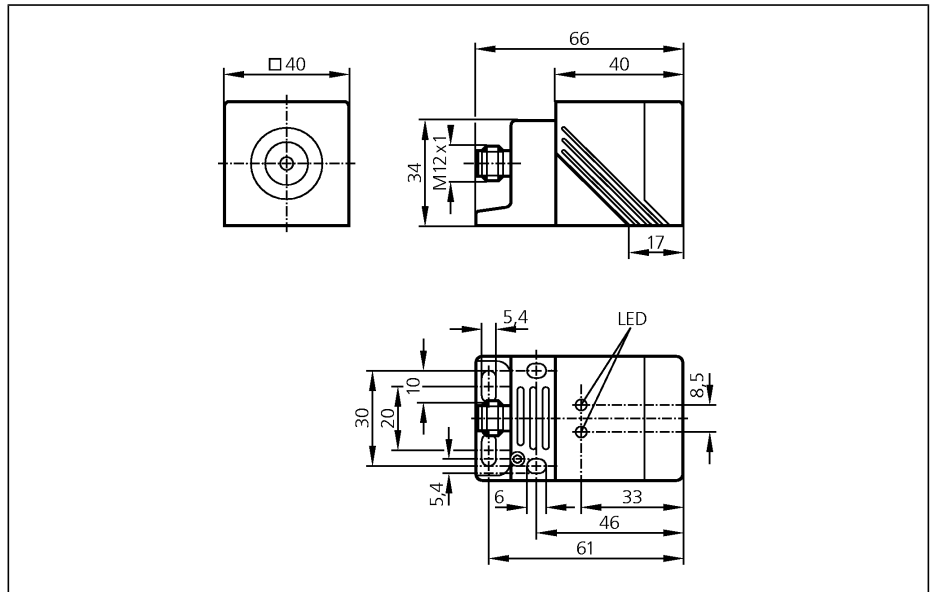
Inductive sensors

IM501A


IMC4020BCPKG/K1/US/3D
Inductive sensor
Rectangular, plastics
Plug and socket

Correction factor = 1
ATEX approval
Group II, category 3D

Sensing range 20 mm [f]
flush mountable



Electrical design	
Output	
Operating voltage	[V]
Current rating	[mA]
Short-circuit protection	
Reverse polarity protection	
Overload protection	
Voltage drop	[V]
Current consumption	[mA]
Real sensing range	[mm]
Operating distance	[mm]
Switch-point drift	[% of Sr]
Hysteresis	[% of Sr]
Switching frequency	[Hz]
Correction factors	
Operating temperature	[°C]
Protection	
EMC	
Marking of the unit	
Housing material	
Function display	
Switching status	LED
Operation	LED
Connection	

DC PNP complementary	
Operating voltage	10...36 DC
Current rating	200
Short-circuit protection	pulsed
Reverse polarity protection	yes
Overload protection	yes
Voltage drop	< 2.5
Current consumption	< 20 (24 V)
Real sensing range	20 ± 10 %
Operating distance	0...16.2
Switch-point drift	-10...10
Hysteresis	3...15
Switching frequency	200
Correction factors	mild steel = 1 / stainless steel approx. 1.1 / brass approx. 1.1 / Al approx. 1.1 / Cu approx. 1.1
Operating temperature	-20...60
Protection	IP 67, II
EMC	EN 60947-5-2
Marking of the unit	 II 3D Ex tD A22 IP67 T80°C X
Housing material	housing: PPE; active face: PPE; end cap: PPS; connector housing: brass white bronze coated; bracket: PPS
Function display	
Switching status	yellow
Operation	green
Connection	M12 connector

IM501A

Wiring

