


Inductive sensors
NAMUR EN 60947-5-6 

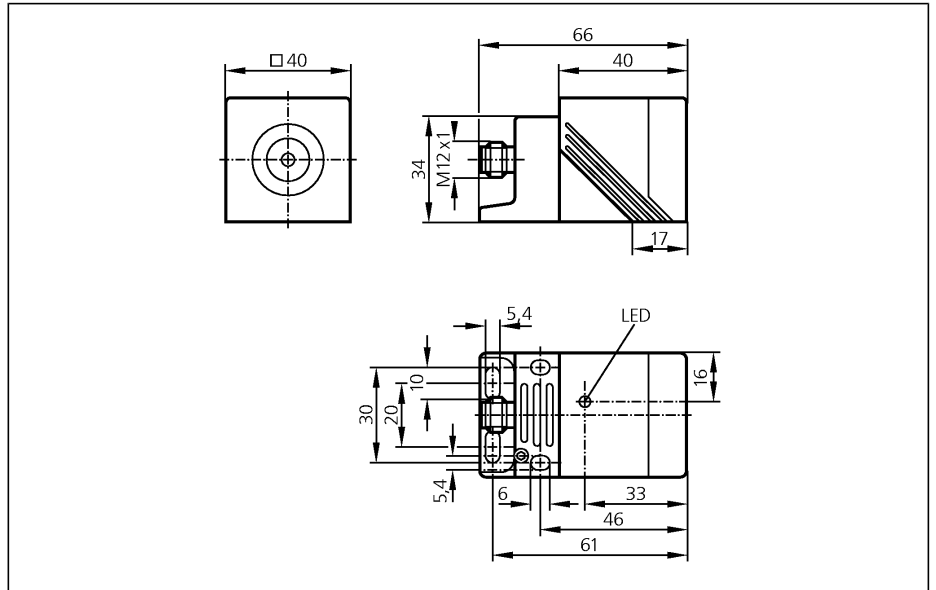
NM500A

IMC2020BN/US/2G/1D

Rectangular, plastics
Plug and socket

ATEX approval
Group II, category 2G
Group II, category 1D

Sensing range 20mm [f]
flush mountable



Electrical design

Output

Nominal voltage	[V]
Supply voltage when used outside the hazardous area	[V]
Current rating when used outside the hazardous area	[mA]
Current consumption	[mA]
Internal capacitance	[nF]
Internal inductance	[µH]
Real sensing range	[mm]
Switch-point drift	[% of Sr]
Hysteresis	[% of Sr]
Switching frequency	[Hz]
Correction factors	

Operating temperature	[°C]
Protection	
Shock / vibration resistance	
EMC	
Approval	

Marking of the unit




Housing material

Function display	
Switching status	LED
Connection	

Remarks

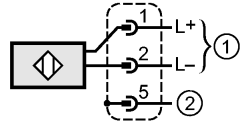
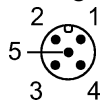
Accessories (included)

connection to certified intrinsically safe circuits with the max. values U = 15 V / I = 50 mA / P = 120 mW normally closed

8.2 DC (1kΩ)
7.5...30 DC
< 30
< 1 *)
< 250
< 450
20 ± 10 %
-10...10
1...15
200
mild steel = 1 / stainless steel approx. 0.7 / brass approx. 0.5 / Al approx. 0.4 / Cu approx. 0.3
-20...70
IP 67, III
30g (11 ms) / 10-55 Hz (1 mm)
EN 60947-5-6
BVS 04 ATEX E 091 X IECEX BVS 06.0003
 II 2G EEx ia IIB T6 Ta: -20...70 °C  II 1D Ex iaD 20 T 90 °C Ta: -20...70 °C  Ex ia IIB T6 Ta: -20...70°C
housing: PPE; end cap: PPS; connector housing: brass special coated; Mounting adapter: PPS
yellow
M12 connector
*) damped; (> 2.1 mA undamped) 5 positions of the active zone possible
Mounting bracket, hex-wrench

NM500A

Wiring



1 = connection to NAMUR-amplifier
2 = Potential equalisation plug housing