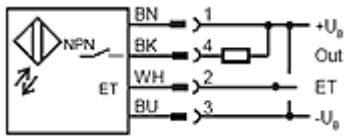
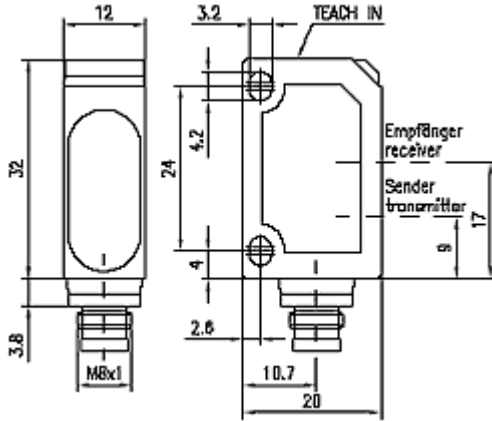


Contrast tester
12x32x20
Sn = 150 mm



Approvals



Insulation class II

If not differently indicated,
all values by IEC 947-5-2 (DIN EN60947-5-2)

Specifications subject to change

Balluff GmbH
Postfach 1160
73761 Neuhausen
Telefon (07158) 173-0
Telefax (07158) 5010

Common Data

Sensortype	Contrast tester
Switching frequency	1000 Hz
Rated operating distance Sn	mm 150
asured operating distance Sa	mm 40...150
Hysteresis	< 10% of adjusted scanning range
Indication switching element	yes
Indication special function	function reserve green LED, status indicator yellow LED
Ambient temperature	°C -20...+60°C
Light	laser red light 650nm
Sensitivity adjustment	Button teach-in

Mechanical Data

Measurements BxHxT or DxT	mm	12x32x20
Housing material		ABS
Degree of protection	IP	IP67
Connection		Connector M8x1
Weight		40g

Electric Data

Current		DC
Switching function		switchable
Output		NPN
Rated operational voltage Ue	V	24 V DC
Supply voltage	V	10...30V DC
No-load supply current	mA	≤25
Short protection		yes
Protectde against polarity rev		yes
Output current		≤ 100mA

28.06.2004 / Online-Information