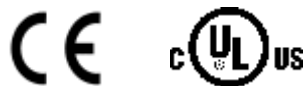
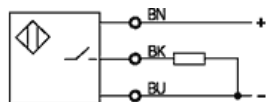
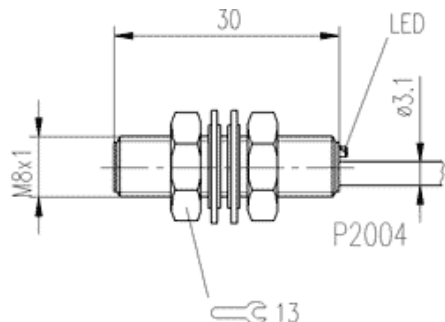


**Inductive Sensors**  
**BES 516-324-E4-C-PU-03**

**BALLUFF**  
sensors worldwide

cyl. M 8  
Sn = 1,5 mm  
DC 3-Wire  
shielded



Utilization categories DC 13

If not differently indicated,  
all values by IEC 60947-5-2 (DIN EN60947-5-2)  
Specifications subject to change

**Common Data**

Mounting		shielded
Rated operating distance Sn	mm	1,5
Assured operating distance Sa	mm	0...1.2
Repeatability	%	<= 5
Hysteresis	%	<= 15
Function indication		yes
Ambient temperature range	°C	-25...+70
Polution Degree		3
IEC-Code		I 1A08AP1
Time delay before availability	ms	<= 20

**Mechanical Data**

Housing size	mm	cyl. M 8
Measurements BxHxT or DxT	mm	M8x1 x 30.5
Housing material		stainless steel
Material of sensing face		PA 12
Degree of protection		68 acc. BWN Pr 20
Connection		Cable
Cable type		LiFY-11Y-O

**Electrical Data**

Current type		DC
Wiring		3-Wire
switching function		normally-open
Output signal		PNP
Rated operational voltage	V	24 DC
Rated operational current	mA	200
Supply voltage	V	10...30 DC
Ripple	%	<= 15
Rated supply frequency	Hz	3000
No-load supply current	mA	<= 9 / <= 3
Off-state current	µA	<= 20
Voltage drop	V	<= 2.5/-
Short circuit protection		yes
Protected against polarity reversal		yes

05.09.2006 / Online-Information

Balluff GmbH  
Postfach 1160  
73761 Neuhausen  
Telefon (07158) 173-0  
Telefax (07158) 5010



Casp System Sp. z o.o., Puszkińska 2, 43-603 Jaworzno, Polska, [www.casp.pl](http://www.casp.pl), e-mail: [biuro@casp.pl](mailto:biuro@casp.pl), tel/fax: +48 32 614 09 17